



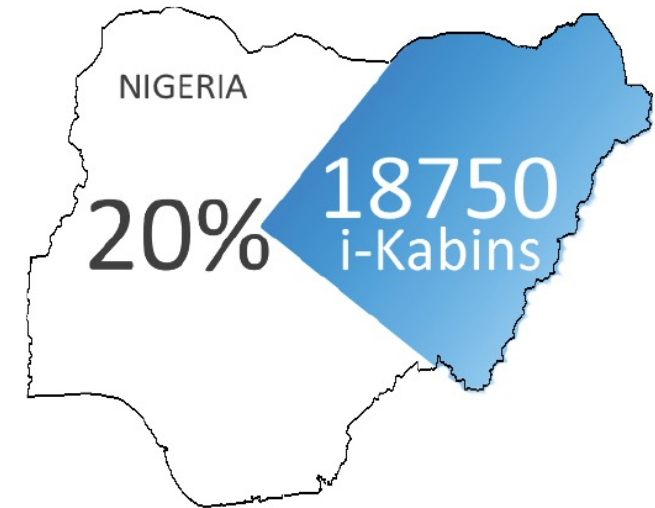
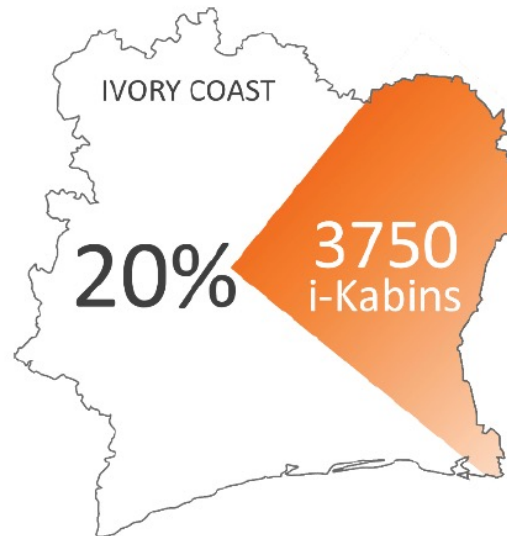
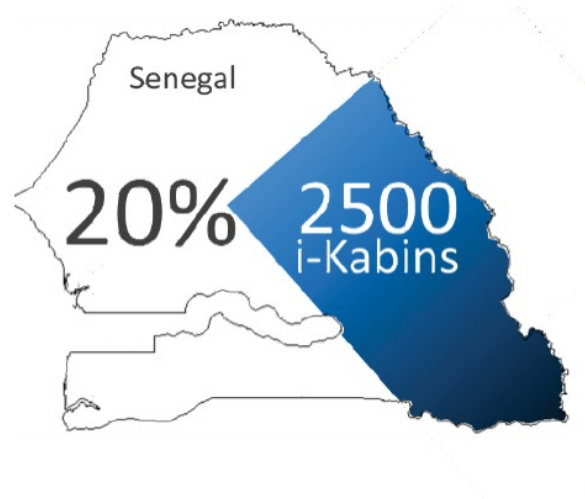
## i-Kabin Solution,

Connecting the un-connectable

## Simplify access to energy

### Opportunities

- In Southern Sahara Africa ,
- Transpose the kerosene expense of \$ 14 / week / family
- To our mobile electricity service

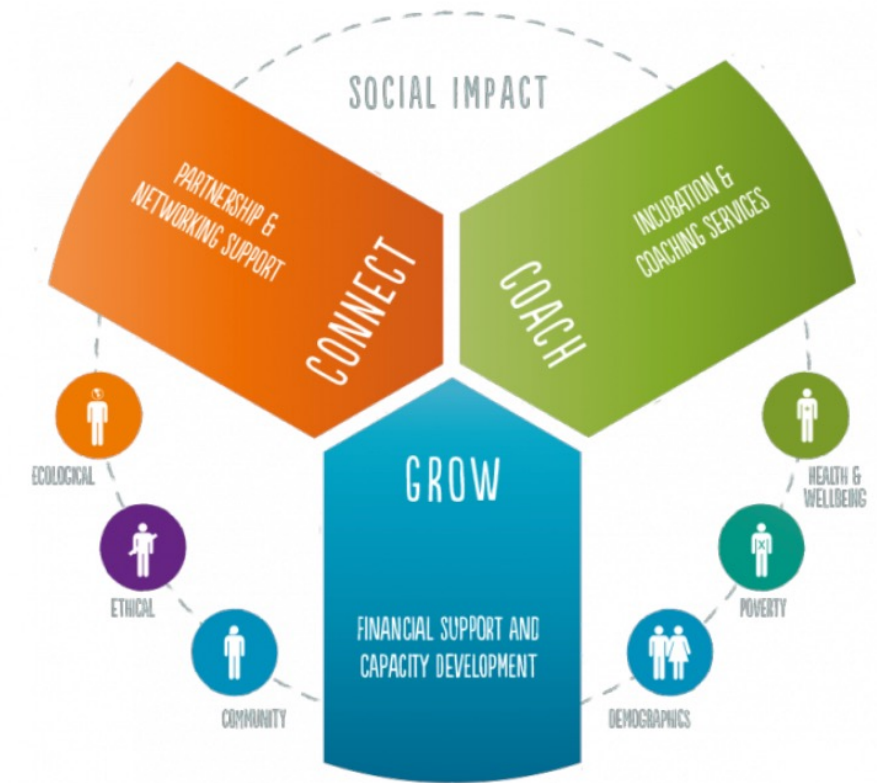


- Objectives 5 years:
- 10,000 i-Kabins, 2,000,000 families, \$ 2 / week / family
- \$ 4M gross / week (turnover)
- \$ 208M annually (turnover)

# Simplify access to energy

## Social Economic Impacts

- Study Aid / Homework ...
- Business
- Extended Business Hours
- Reduction of Crimes ...
- Environmental impacts
- Consumption of kerosene storm lamps:
  - 0.95 liter / day / family (average Africa SSA)
  - 1 x i-Kabin providing electricity to 250 families:
  - Reduction of 91,250 liters of kerosene per year.
  - Reduction of 226.3 metric tonnes of CO<sub>2</sub> / year
  - So if 10,000 i-Kabins installed:
  - Remove coal-fired power plant 2.5 million (Tm) CO<sub>2</sub> / year
- Health Impacts:
  - Combustion of kerosene associated with
  - Tuberculosis and Cataract.
  - Accidental kerosene intake (3.6% of children):
  - Main cause of poisoning of children.
  - Mortality rate up to 25% for hospitalized children.





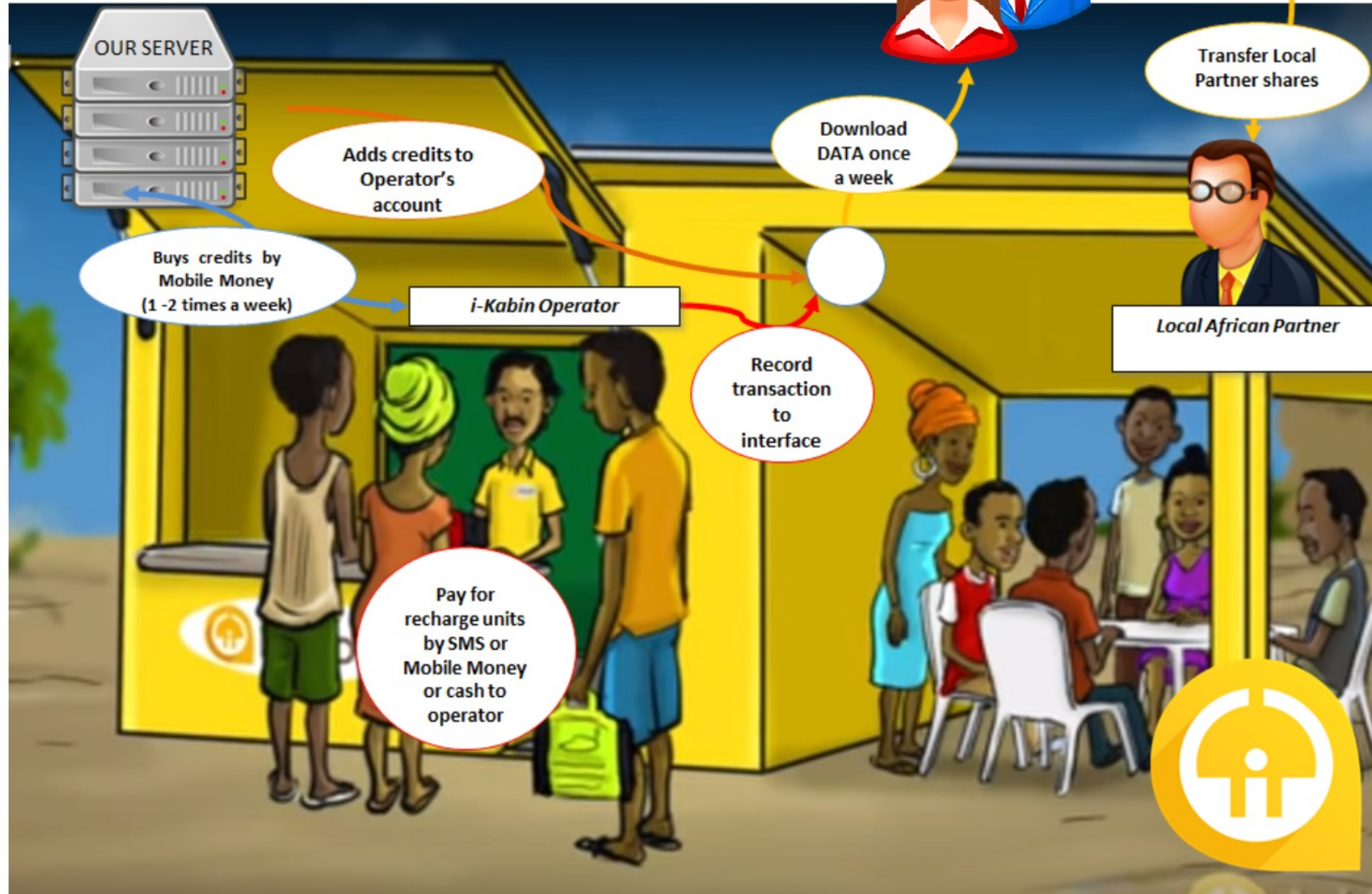
# Simplify access to energy

## Revenue Sources



# Simplify access to energy

## Operating Model





# Simplify access to energy

## Products and Services

- Micro-enterprise management
- Serve between 200 and 300 families and SME owners
- Designed to recharge 200 to 300 i-Packs per week
- Recharges mobile phones
- Additional Income;
  - I-Kabin Accessories Sales
  - WiFi Hotspot (Internet access hub)
    - Space for advertising
  - Floor space for other business
    - Online sales (Amazon, Jumia ...)
    - Mobile Money Counter (Vodacom, Airtel ...)
    - UPS Counter, DHL ...
  - Big Data
  - Sales of products of other companies
    - Telkom Indonesia ...



The image cannot be displayed. Your computer may not have enough memory to open the image, or the image may have been corrupted. Restart your computer, and then open the file again. If the red x still appears, you may have to delete the image and then insert it again.

# Simplify access to energy

## Why we dominate

	Low Cost per use	CELL RECHARGE	MORE THAN ONE LIGHT AT A TIME	PAY AS YOU USE (MOBILE MONEY)	USE WITH OTHER ELECTRIC DEVICES	PORTABLE	EFFICIENCY
	✓	✓	✓	✓	✓	✓	✓
 BrightBox		✓	✓		✓		✓
 M-KOPA LLC	✓	✓	✓	✓			
 KARIBU	✓	✓				✓	
		✓	✓	✓		✓	✓
 GOALZERO		✓	✓		✓	✓	✓

NOWEA  
ENERGY



Thank You